

Shetland Challenge 2025

Fair Isle Cowl

The yarn must be your own hand spun Shetland wool.

The original challenge was for your own hand prepared, hand spun Shetland fleece. If dyed, you would have done it yourself. It is now allowed that prepared Shetland may be used, but details of prep, whether fleece or top, and any dye details, must be included in the entry form.

The design below must contain at least four colours. One main colour, and three contrasting colours. The colours can be natural colours, dyed colours, or a mixture of both.

The design is to be knitted in the round. You may use DPNs, 2 circulars, or magic loop. You will also need a moveable stitch marker.

The top and bottom ribs are *corrugated rib*. To work this, using main colour for the knit stitch, and a contrast colour for the purl stitch, work k1,p1 rib. This makes a slightly less elastic rib than standard.

To follow the chart, read from right to left, bottom to top.

Knit the 12 stitch repeat 11 times in each round.

Remember to adjust the number of repeats if you have added or subtracted any, to suit the yarn.

Tension

The tension required for the cowl will depend entirely on what is suitable for the yarn you have spun. The end product should have a comfortable feel to the fabric, neither hard from being too closely knit, or floppy from being too loosely knit.

It is permitted to add repeats of the 12 stitch design, should it be necessary, to make the item wearable.

Abbreviations

MC = Main Colour

CC1 = Contrast colour 1

CC2 = contrast colour 2

CC3 =contrast colour 3

DPNs = Double pointed needles

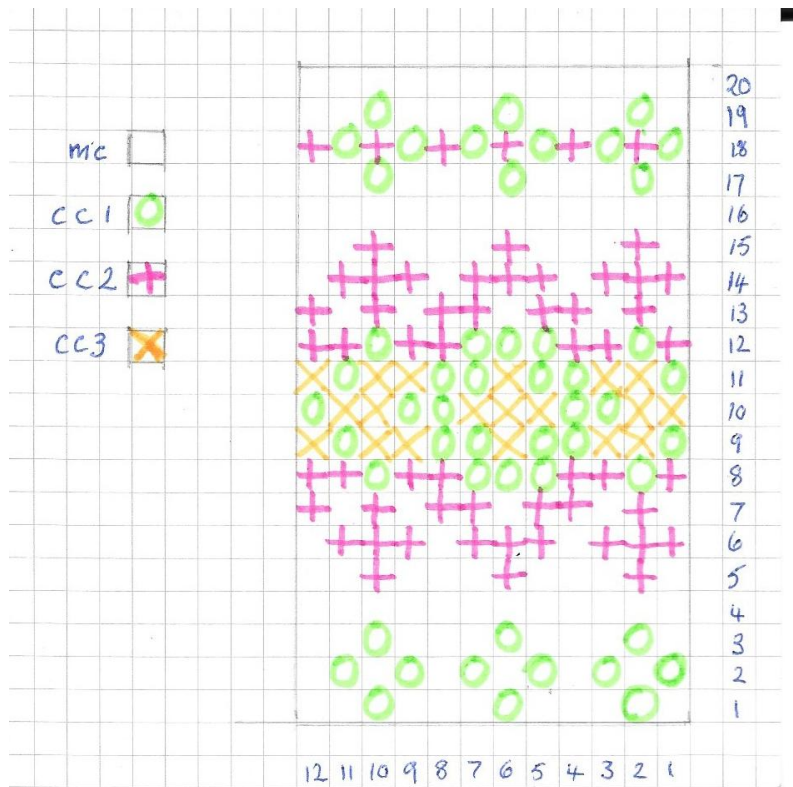
Circs = Circular needles

Sts = stitches

Inc =inclusive

Shetland Challenge 2025

Chart



Pattern

Cast on 132 sts in MC, in a needle size to suit the yarn.

Join to knit in the round. Place st marker to denote beginning/end of round.

Using MC and 1 of the CCs, work in corrugated rib for 8 rounds.

Knit 2 rounds in MC only.

Knit rounds 1 -> 20 inc.

Repeat rounds 5 -> 16 inc.

Repeat rounds 1 -> 3 inc.

Knit 2 rounds in MC only.

Work 8 rounds of corrugated rib, to match the start of the cowl.

Cast off in MC only, being careful not to tighten the tension.

Shetland Challenge 2025

Top example shows full pattern depth

Bottom example shows an alternative colour scheme

